



CECCOTTICOLLEZIONI

campionario materiali
samples

l'unicità di un prodotto ceccotti collezioni è parte della sua materia, di ogni suo elemento costitutivo. legni, vetri, metalli e tutti gli altri materiali che compongono un mobile ceccotti sono frutto di un accurata selezione, condotta in tutto il mondo, per individuare le migliori materie prime con cui dare forma e proposte esclusive. tutti i componenti meccanici, cerniere e ferramenta sono realizzati dall'azienda, elementi essenziali di ogni proposta e parti integranti della sua unicità.

the unicity of ceccotti collezioni's products is also due to an accurate selection of each component. wood, metal, glass and all other materials making up a piece of ceccotti's furniture, are chosen from all over the world to guarantee the best primary matter for creating exclusive proposal. the hardware, made by the company itself, is an essential part of each proposal and contributes to it's unicity.

ceccotti utilizza esclusivamente legno massello e multistrati di pioppo impiallacciato. taglio e lavorazione dei legni sono sempre condotti con metodi manuali, con assemblaggio tramite collanti vinilici. per la tinteggiatura, vengono utilizzate diverse finiture con colorazioni ad acqua, stracciatura eseguita a mano e finitura a base di cera naturale.

i legni provengono da ogni parte del mondo, esprimendo un patrimonio di tradizioni, colori e venature. differenti valenze stilistiche che la collezione interpreta. ciliegio: provenienza nord america. rovere di slavonia: provenienza croazia. noce italiano: produzione nazionale. noce americano: nord-est degli stati uniti. zebrano: africa occidentale. palissandro: india orientale. acero: nord europa.

ceccotti collezioni used only solid wood and poplar-plywood veneered wood. sawing and wood work is done by hand, the pieces are then assembled together using vinyl glue. finishes carried-out with water colours that are then wiped with a cloth by hand, natural wax to finish.

the wood used comes from all over the world and express a heritage of traditions, different colours and wood grains. different styles are represented through the collection. cherry wood: north america slavonia oak: place of origin croatia. italian walnut: italy. american walnut: north-east of the usa. zebra wood: western africa. rosewood: eastern india. maple: northern europe.

legno
wood



ciliegio naturale
natural cherry-wood



ciliegio work
cherry-wood colour work



ciliegio tinto noce
cherry-wood stained walnut



ciliegio tinto noce americano
cherry-wood stained American walnut



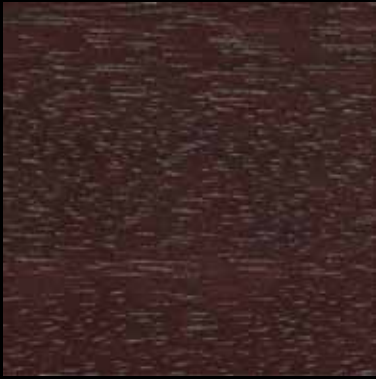
ciliegio tinto wengé
cherry-wood stained wenge



noce americano
American walnut



noce americano scuro
dark American walnut



noce americano brown
American walnut stained brown



noce americano moka
American walnut stained moka



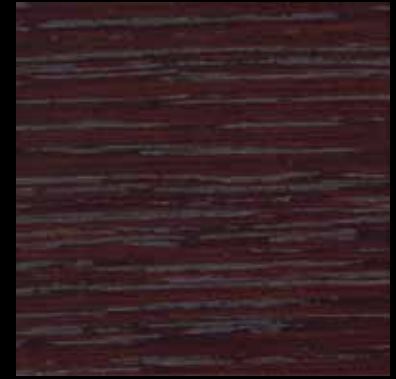
noce italiano
italian walnut



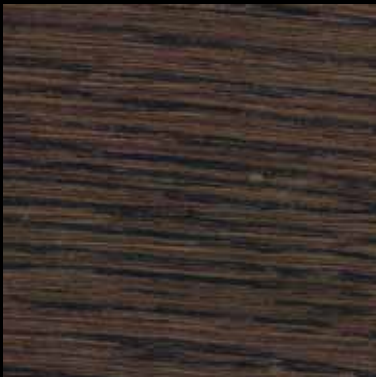
rovere sbiancato
bleached oak



rovere tinto noce americano
oak stained American walnut



rovere tinto wengé
oak stained wenge



rovere tinto moka
oak stained moka



acero
maple



palissandro
rosewood



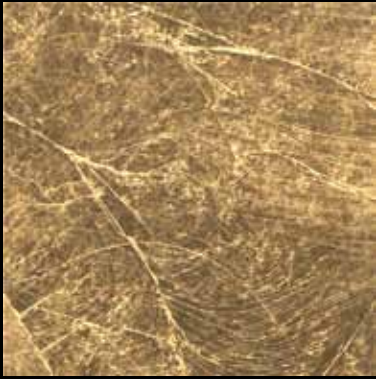
zebrano
zebra-wood



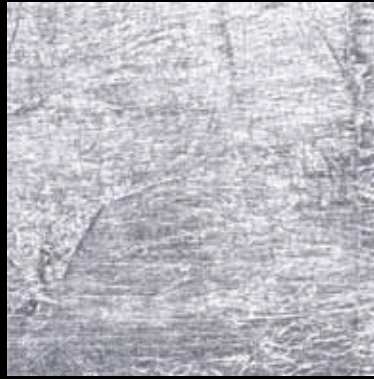
ebano makassar
ebony makassar



wengé
wenge



foglia oro
gold-leaf



foglia argento
silver-leaf

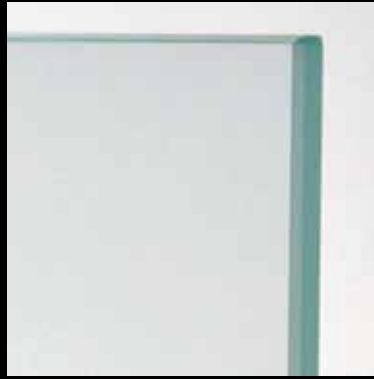
i vetri utilizzati, diversi per singoli prodotti, appartengono alle seguenti tipologie: vetri temperati, ovvero fino a 5 volte più resistenti di un vetro normale; visarm ovvero vetro doppio con pellicola interna; vetri singoli, disponibili nelle versioni: trasparente, madras, bronzato e fumé.

different types of glass are used: tempered glass that is 5 times more resistant than a normal glass; visarm a double glass with a film between; single glass, available in various finishes as transparent, sandblasted, bronzed or smoked colour.

vetro
glass



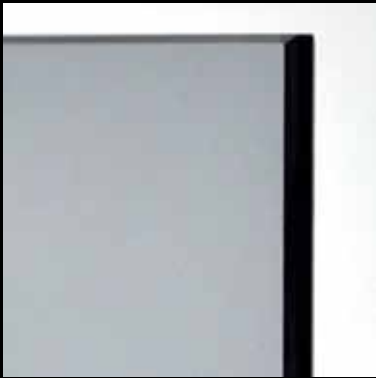
trasparente
transparent glass



madras
sandblasted glass



bronzato
bronzed glass



fumé
smoked glass



pietra
stone



bianco statuario
white statuary (italy)



galala (egypt)



pietra santafiora
stone santafiora (italy)

metallo
metal



ottone
brass



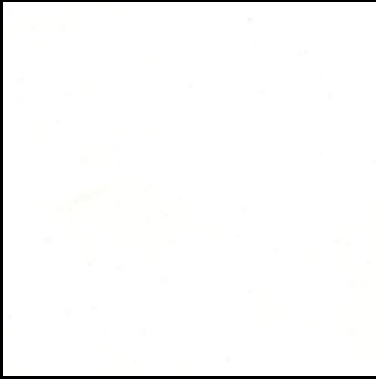
ottone brunito
burnished brass



ottone nichel satinato
satin nickel brass



acciaio nichelato nero
satin nickel steel



bianco
white



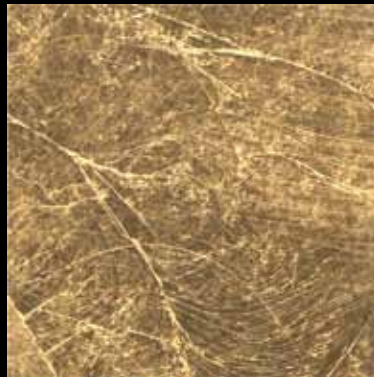
nero
black



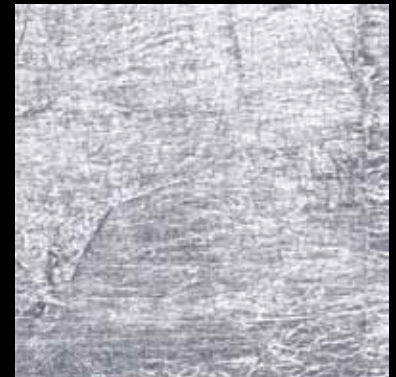
arancio
orange



azzurro
light blue



foglia oro
gold-leaf



foglia argento
silver-leaf

tessuto
fabric



LAVELLO 14



STEELCUT 110



SIDE 18



LAVELLO 15



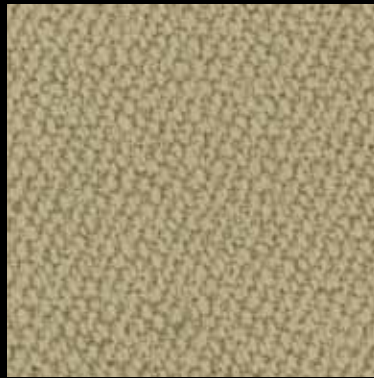
LAVELLO 01



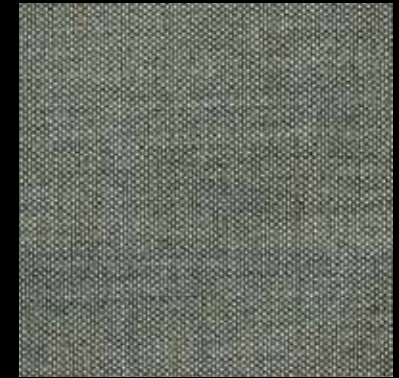
STEELCUT 240



DIVINA 3 224



VIDAR 4015



REMIX 2 133



SIDE 24



BALDER 2 4473



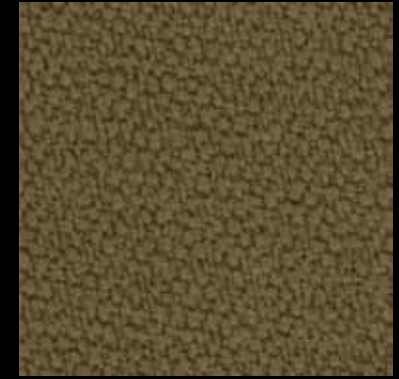
LAVELLO 22



DIVINA 3 356



BALDER 2 470



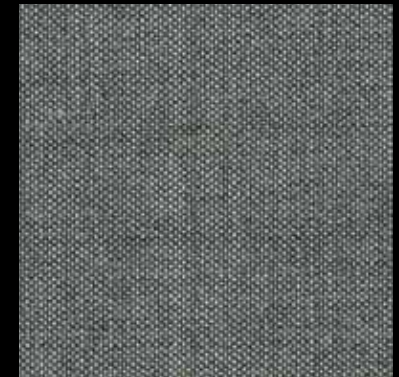
VIDAR 2074



DIVINA 2 280



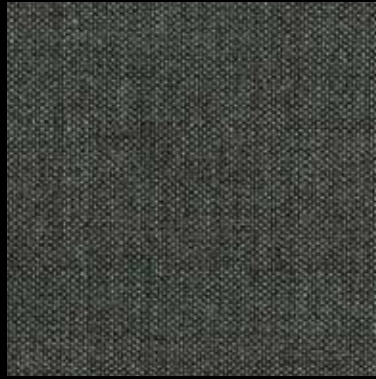
VIDAR 1970



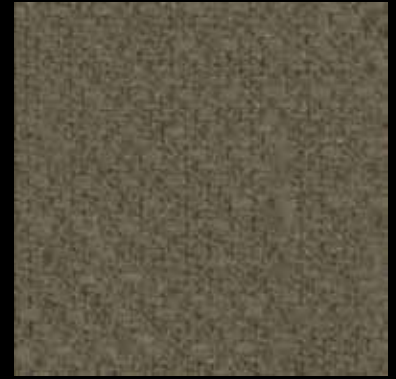
REMIX 2 143



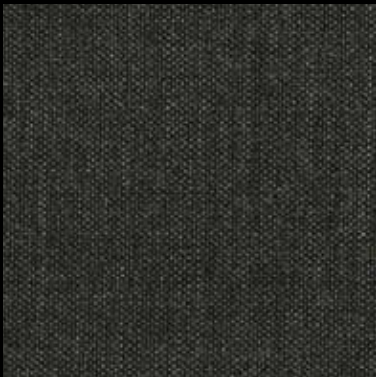
DIVINA 3 173



REMIX 2 163



LAVELLO 28



REMIX 2 173



BALDER 2 1880



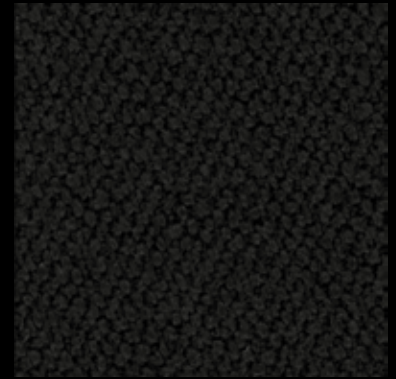
DIVINA 3 191



STEELCUT 190



SIDE 25



VIDAR 1880

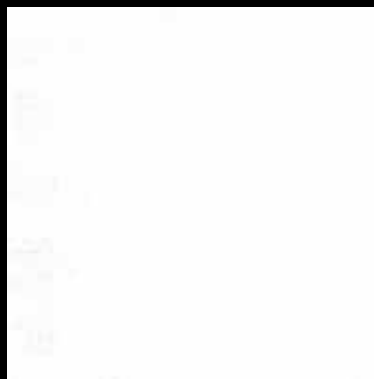


LAVELLO 10

tessuto tendine
curtain fabric




LINO ECRÙ





LINO GREZZO





COTONE BIANCO


BALDER 2 26% cotone
68% lana vergine
6% poliammidica 


DIVINA 2 e 3 100% lana vergine 

LAVELLO 73% viscosa. viscose
27% lino. linen 

SIDE 75% viscosa. viscose
25% poliestere 

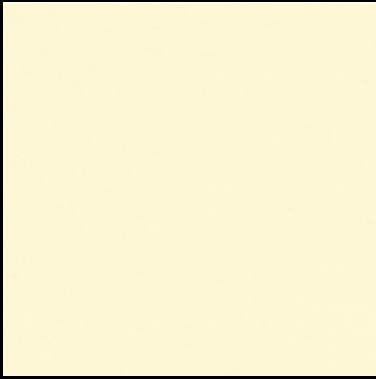
STEELCUT 90% lana vergine, pettinata
10% nylon 

VIDAR 94% lana vergine
6% poliammidica 

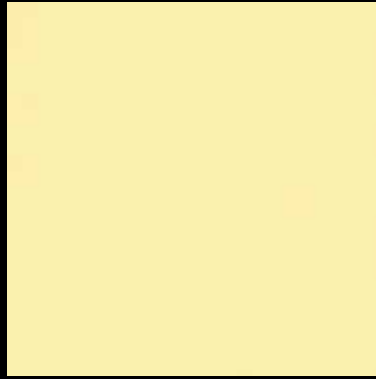
REMIX2 90% lana vergine, pettinata
10% nylon 



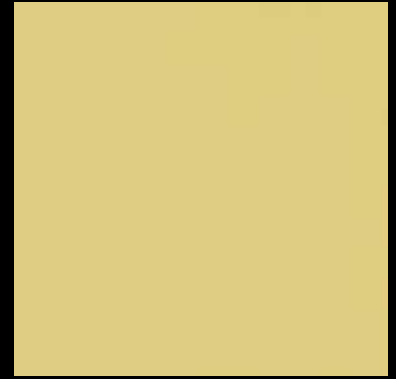
pelle
leather



2190



2024



2004



2054



2062



2126



2040



2076



2002

spessore
thickness

1,2/1,4 mm

tipologia
lether types

fiore corretto
corrected grain

origine animale e provenienza
raw material

pelli bovine europee
european raw hides

tipo di concia
tannage

ai sali di cromo
chrome tannage

tipo di tintura
dyeing

all'anilina passante in botte
aniline through-dyeing

tipo di rifinitura
finishing

pigmentata
pigment finishing



201 testa di moro



202 antracite



204 fango

spessore
thickness

1,1/1,2 mm

tipologia
lether types

pieno fiore
full grain

origine animale e provenienza
raw material

pelli bovine europee
european raw hides

tipo di concia
tannage

ai sali di cromo
chrome tannage

tipo di tintura
dyeing

all'anilina passante in botte
aniline through-dyeing

tipo di rifinitone
finishing

pura anilina
pure aniline

consigli per mantenere inalterata la qualità della pelle



evitare la luce diretta del sole
avoid placing leather near direct sun



evitare l'esposizione a fonti di calore
keep the leather away from heat sources



spolverare regolarmente la pelle con un panno morbido ed asciutto
dust regularly with a soft and dry cloth

i colori del campionario sono indicativi
the colours in the sample card are indicative